

The German Power Grid* 2022

The Power Grid length reaches ***4.9 times** from the Earth to the Moon.
Or ***47.7 times** around the Equator of the Earth ...

⚡ Electric circuit distances in Germany in km ⁽¹⁾

⚡ Low voltage 1.246.000
[0,4 Kilovolt]

⚡ Medium voltage 532.000
[6 to ≤ 60 Kilovolt]

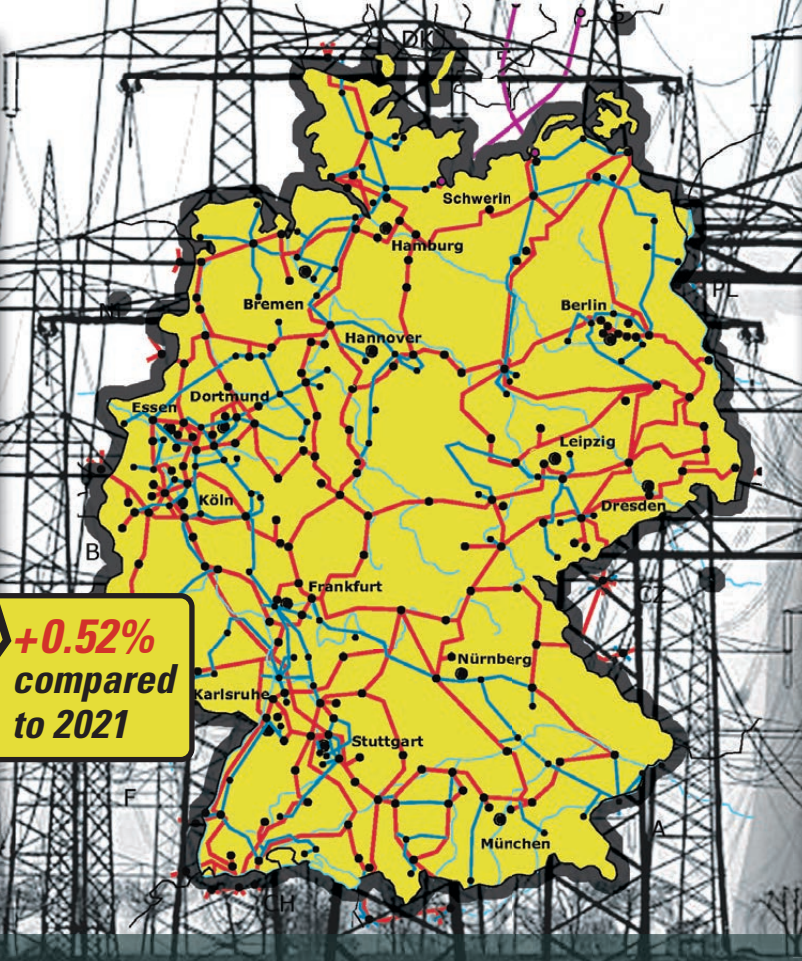
⚡ High voltage 7.500
[> 60 to < 220 Kilovolt]

⚡ Extra-high-voltage 133.000
[220 and 380 Kilovolt]

Total: ***1.911.000**

+0.52% compared to 2021

HVDC transmission link



⚡ Numbers of substations/transformers ⁽²⁾

⚡ Medium voltage 557.700
[6 to ≤ 60 Kilovolt]

⚡ High voltage 7.500
[> 60 to < 220 Kilovolt]

⚡ Extra-high-voltage 1.100
[220 and 380 Kilovolt]

Total: **566.300**

2) Figures from 2006. We could not get any updates from the responsible German institutions ...



IMPLEMENTING NEW IDEAS TO SUPPORT OUR ENERGY FUTURE

www.aaevers.com



› Data-Source: BDEW, Status: March 2023 › First released: 2007; latest update: July 2023